



**PROMINENCE**  
ESTATES



**RESIDENTIAL**  
PROPERTY EXPERTS

COVENTRY, WARWICKSHIRE  
& LEAMINGTON SPA

**SIR HENRY PARKES ROAD,**  
COVENTRY, CV4 8GG

**£2,260 PER CALENDAR**

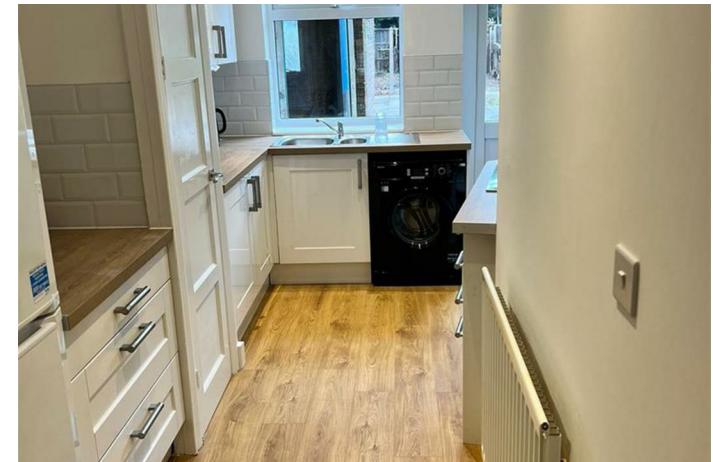
SIR HENRY PARKES ROAD



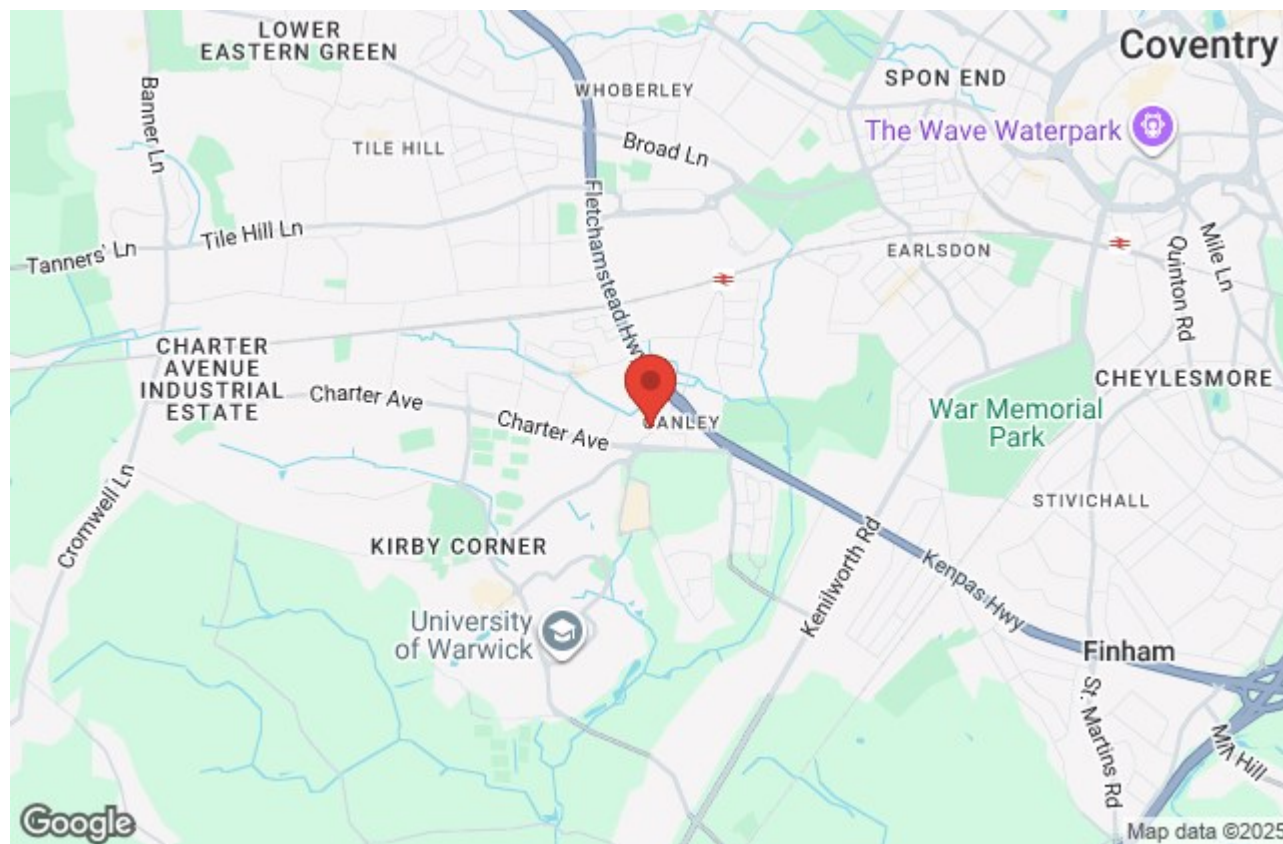
**PROMINENCE**  
— ESTATES —

Available August 2026!! Welcome to this fantastic 4-bedroom furnished student property, ideally situated near Cannon Park Shopping Centre and Warwick University. The residence features a well-appointed bathroom, ensuring convenience for all occupants. The spacious kitchen is a highlight, equipped with modern appliances and boasting a separate washer and dryer for added convenience. With its prime location and thoughtful amenities, this property offers a comfortable and convenient living experience for students seeking proximity to both essential amenities and educational institutions.

\* Photographs supplied by the landlord







Prominence Estates  
5 Queen Isabels Avenue,  
Cheylesmore,  
Coventry,  
CV3 5GE

02476 309 826  
[lettings@prominenceestates.com](mailto:lettings@prominenceestates.com)  
[www.prominenceestates.com](http://www.prominenceestates.com)

  
**PROMINENCE**  
— ESTATES —